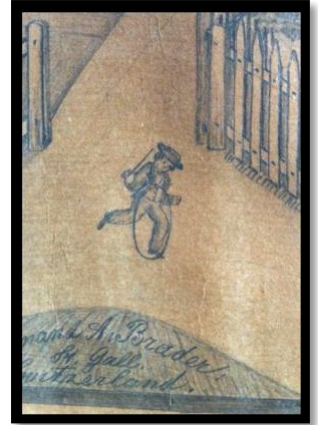


Ferdinand Brader...Tramp Artist

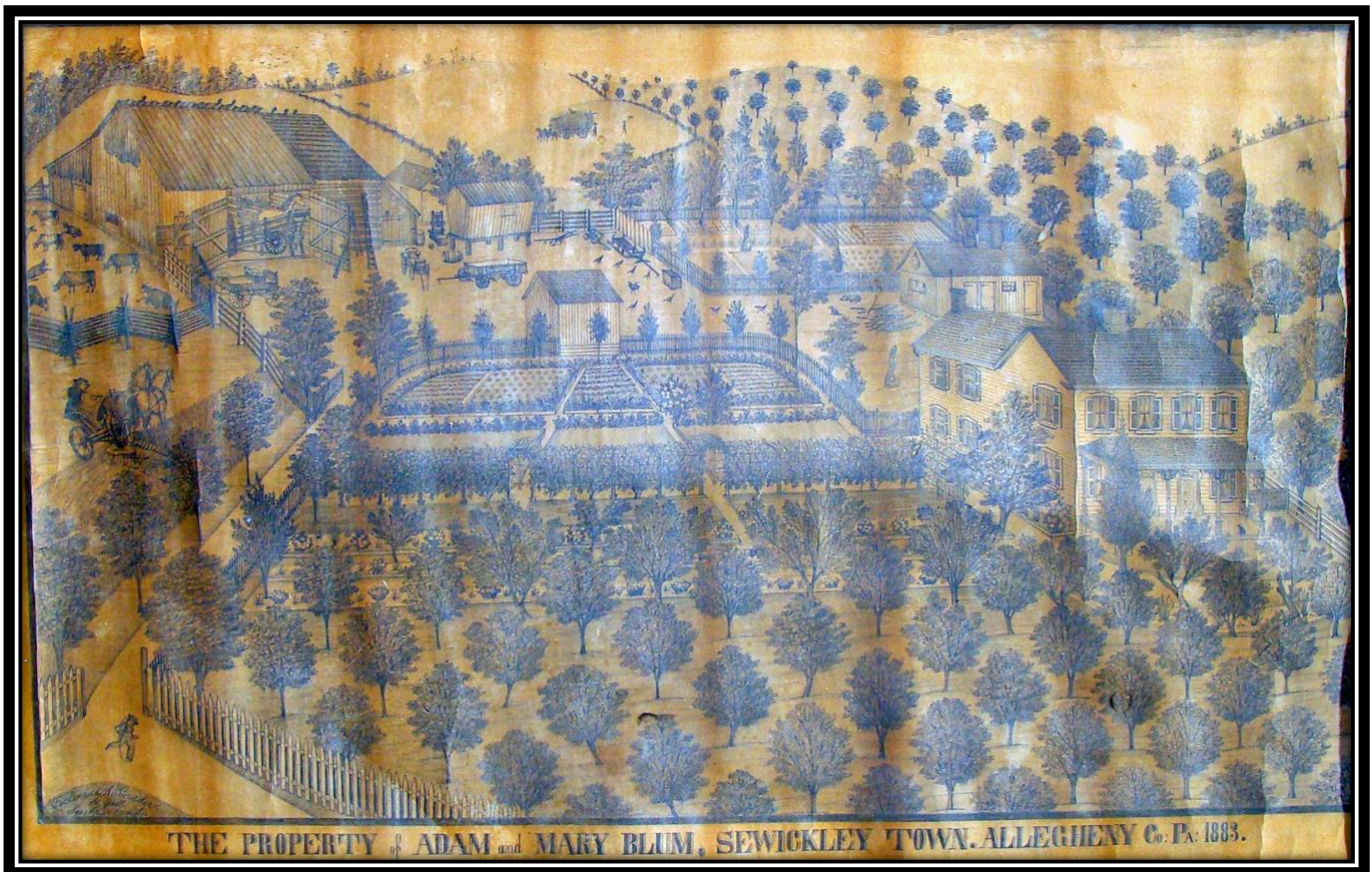
After arriving in Pennsylvania from his native Switzerland in the 1870s, Ferdinand Brader worked his way across the state as an itinerant artist, knocking on doors in search of food and a place to sleep in exchange for an oversized pencil drawing of the family's farm. His earliest drawings were made in Berks and Lancaster counties.

Brader passed through Allegheny and Beaver counties in 1883 as he made his way into Ohio, remaining long enough to make four drawings that included Adam and Mary Blum's Camp Meeting Road farm in Sewickley Township. In addition, he drew the Ferry farm in Economy, the Hammerle farm in Freedom and the Schuring farm in Franklin Township. It is unknown if there were others.

The majority of his drawings were made in and around Stark County, Ohio where he continued to work until returning to Switzerland in 1890 when nothing more was heard of him. Today, his exquisitely detailed drawings are in museum collections and fetch thousands of dollars at auction.

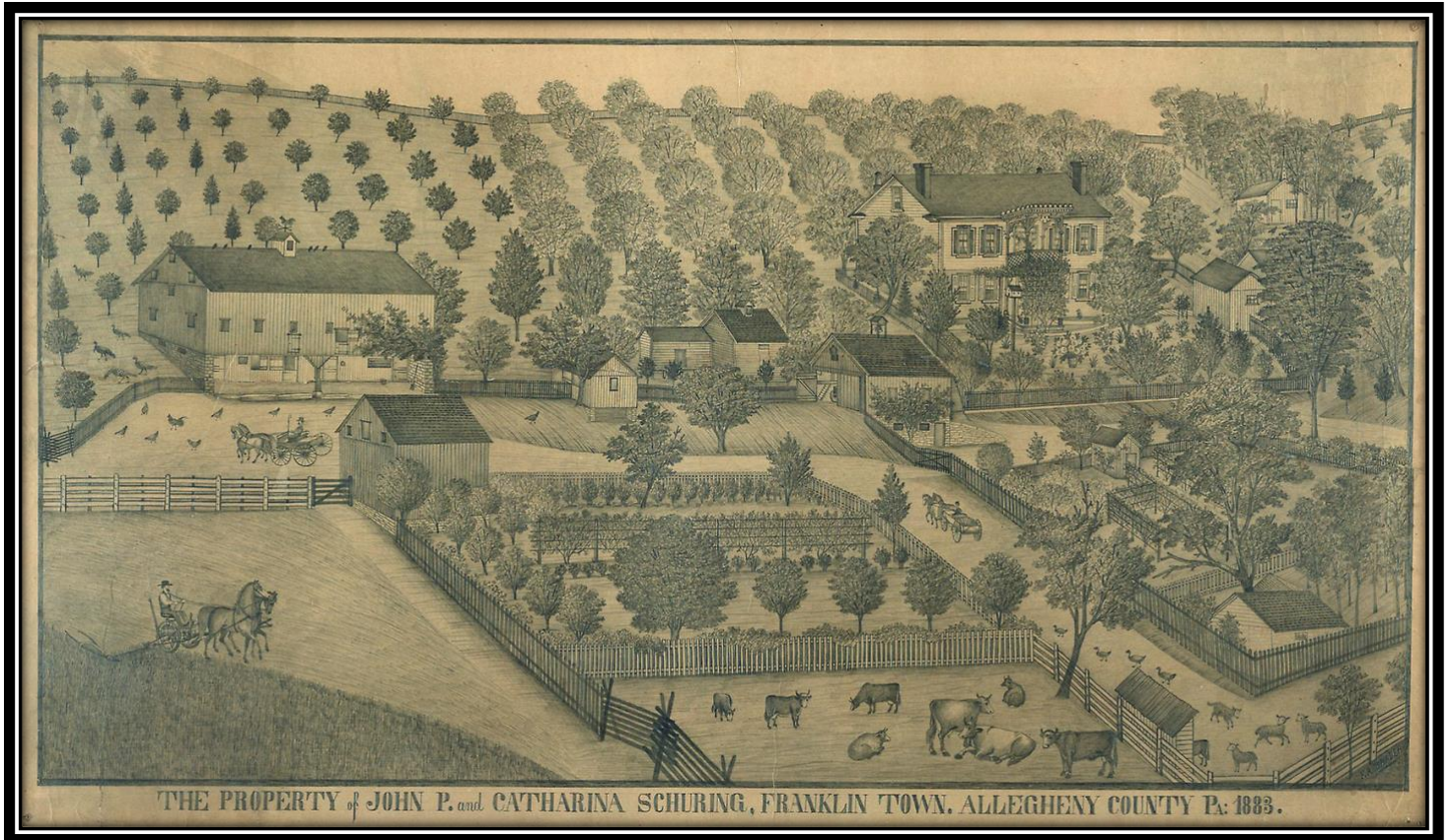


(Blum drawing detail.)



Adam and Mary Blum's Camp Meeting Road farm as drawn by Ferdinand Brader in 1883.
Summerlawn Drive now occupies much of the former Blum farm.

(Photo courtesy of Kathleen Welschus)



John and Catharine Schuring's Franklin Township farm as depicted by Ferdinand Brader in 1883. The farm was once located in the vicinity of Wharrey Drive in what is now Franklin Park Borough. It is in the collection of the Art Institute of Chicago.